

# Antingham & Southrepps Primary School and Nursery



## Welcome to Antingham and Southrepps Primary School

We warmly welcome you and your family to our Nursery and Reception Class. We are the Bees! Nursery are Bumblebees and Reception are Honeybees. We hope you will be a very busy bee in our class!

We aim to provide a happy, secure, friendly and stimulating environment in which children can develop and grow.

Your child enters the Bee class as an experienced learner, bringing from home a great deal of knowledge about themselves and their world. We hope to be able to work together to build on and extend their developing interests, skills and experiences. We believe that through first-hand experiences children can meet challenges, make decisions and think creatively and critically. We are committed to working in partnership with parents: by working together, we can enhance learning.

We hope that you find this booklet useful. If you have any questions, please come and speak to us, as we are happy to help!



Our School building viewed from the EYFS outdoor area.

Welcome from the Bee team.



Mrs Millin Nursery Lead



Mrs de Neve Reception Teacher



Mrs Matthews  
Nursery Teaching assistant



Mrs Smith  
Reception Teaching assistant

### Other Important people in our School



Mrs Petchey      Head of School



Mrs Flatman      School Secretary

## Daily Routine

Nursery and Reception children can come into the classroom from 8:50am. They are encouraged to hang their coat on their own peg and then self-register by finding their name card and adding it to the class number line. Nursery children are encouraged to have a go at writing their own name and adding it to their number line. Attending regularly allows your child to fully benefit from the continuity of activities and experiences. If your child is unable to attend due to illness, holiday or other circumstances, please contact the school and let us know, our contact telephone number is 01263 833282 or email the school office.

<http://www.nnat.org.uk/antingham-and-southrepps-primary-school/contact>

Throughout the day, your child will have access to rich indoor and outdoor learning experiences. There will be opportunities for your child to work on a one-to-one basis, in small groups and as a class. At 10.15 am, we have a snack provided by school. Children under the age of five are entitled milk. Once your child turns five they may still have milk at school but will need to pay for this. Lunch is at 12:00pm; your child can bring a packed lunch or have a school dinner. You can order free school dinner each week for your child. See our school menu for a healthy variety of opinions.

School finishes at 3:00pm

## Nursery

Your child may enrol in our Nursery the term after they turn 3 years old. We offer all day provision for three and four year olds. Please get in contact with our school secretary, Mrs Flatman, for further details.



## What to bring

On a day-to-day basis, we recommend bringing in the following items: coat, book bag, spare clothes (in case of accidents) and welly boots.

In the warmer months, please bring in a hat and sun-cream (both clearly labelled with your child's name).

It would be appreciated if you could discourage your child from bringing in toys/objects from home. If your child needs something to help them settle please let us know. We will encourage your child to put it in our home box so they can collect it at the end of the school day. Just knowing where it is can be a comfort to a child if they are feeling upset or unsettled.

## **EYFS Curriculum**

Our children explore a rich and stimulating curriculum based on the seven areas of development:

Personal, Social & Emotional Development, Communication & Language, Physical Development,  
Literacy, Maths, Understanding the World, Expressive Arts & Design.

### **In the moment planning**

We recognise that children are most engaged when they are undertaking activities that are self-initiated and based on their current interests. Understanding that when they show high levels of involvement that there is a higher likelihood of progress and development occurring.

In The Moment Planning is very much at the centre of Bee classes approach to learning. This simply involves observing and interacting with the children as they pursue their own interests, assessing and moving the learning on in that moment. To ensure a rich learning experience, we ask big questions alongside this to invite the children to explore themes that link with key events throughout the year and their development. Much of our learning is achieved through stories, provocations and an ever-changing environment, which encourages the children to explore and make discoveries themselves.

### **Personal, Social & Emotional Development**

This includes making positive relationships, developing self-confidence and self-awareness and effectively managing feelings and behaviour. The children have a variety of opportunities to work with one another both in adult-led and in child-initiated activities. On a daily basis, we have circle time to encourage children to share their feelings. Every week the children also have time to consider a dilemma with our '1 Decision' PSHE resource where they learn how to empathise with others, manage their feelings and emotions and share ideas.



## Communication & Language

This includes listening and attention, speaking and listening. Throughout the day, children have frequent opportunities to develop these skills. We read lots of stories, and take turns and listen to one another on the carpet. We have talk partners to explain our ideas to before we express them to the group or class. Our role-play areas and outside environment provide opportunities for rich language development and allows them to trial and test new vocabulary in a purposeful way.



## Physical Development

This includes: moving & handling and health & self-care. Every Tuesday Reception Class have a P.E session to develop key skills. In our continuous provision, the children have access to a variety of activities to develop their fine and gross motor skills. We also have access to larger construction equipment. We go to Forest School once a week where we have space, fresh air and freedom to explore the great outdoors. Our topic sessions provide opportunities for children to learn about independence and keeping healthy.



## **Literacy**

This includes: reading and writing. Our curriculum follows the reading scheme 'Read Write Inc.'. The children have access to daily phonics sessions, which underpins their reading development. For Reception children, sounds we have learnt are sent home in our Phonics home learning book, alongside reading books. We update the Phonics home learning book on a Friday with sounds to recap at home or phonics activities to support handwriting, reading and phonic development. We encourage you to read as much as possible with your child; whether you yourself read to them, or you encourage your child to read their reading books. We check books at the beginning and end of the week, and change them once they have been finished at home. Both Nursery and Reception children are also able to take home library books. These are changed on a weekly basis.



## **Maths**

This includes: numbers and shape, space & measures. We have daily maths sessions, where the children are given first-hand experiences to learn specific concepts. We believe in a practical approach to learning and use a variety of resources to develop children's knowledge and understanding. We also learn rhymes, sing songs and read stories to help us. At school we follow 'White Rose Maths' as a guide to planning exciting and stimulating lessons to engage the children and help embed their learning.



## Understanding the World

This includes: learning about people & communities, the world and technology. Our topic sessions ensure that children have opportunities and experiences to develop their current knowledge about the world. For example, we learn about different cultures and religions, our local environment, life cycles, and the seasons. We take children out on trips to consolidate their knowledge further, as we believe that children learn best through first-hand experiences.



## Expressive Arts & Design

This includes: exploring & using different media & materials and being imaginative. On a weekly basis, we have focused art/d.t sessions where the children learn and develop specific skills. We also have designated art areas in our continuous provision, where the children have constant access to a wide variety of materials. We also hold regular music/dance sessions to encourage the children to represent their feelings and emotions in different ways. The children's interests are taken into account, which we develop on and provide stimulating experiences to promote their ideas further.



## **Behaviour**

Positive behaviour will be reinforced in a variety of ways including, verbal praise, moving along our sunshine chart, stickers and certificates. Every Friday, a child is chosen for a 'Value award'. This could be for some excellent learning, good behaviour or any other positive reason. We link these to our school values. These children receive a special certificate in our celebration assembly on a Friday. We also look out for positive acts from our children and they will receive a 'Shout out' certificate at our assembly too. All the children's certificates are recorded in our regular Newsletters to parents.

Undesirable behaviour will also be addressed. If a child displays undesirable behaviour, we clearly speak to them about their choices and ensure that they understand the actions of their behaviour. We also use a 'wobbly' cloud from our sunshine chart as a visual reminder that they need to make good choices. If they continue to show negative behaviour, we ask them to have thinking time to think about their actions. We strongly believe that having good communication with parents/carers is vital and we will let you know if your child has found it difficult to make good choices.

We are always available at the end of the day for you to come and talk to us. We will ensure to give you an update on how your child has been throughout the day if there has been anything we feel you may need to know about. E.g. did not eat much lunch, had a fall and cut their knee, was a bit sleepy or did an amazing star jump!

If your child has a head bump we will administer first aid and phone you to let you know as soon as possible and keep you informed. We will inform you of any head bump we treat no matter how big or small.



## Learning Journey



We regularly observe your child to help us understand and support their individual wellbeing and development. We want to get to know your child as a unique person with their individual skills, interests, and ideas. The more we understand about your child, the better we can support their learning.

These observations will be used to inform our planning and will be shown on your child's 'Learning Journal'. We currently use 'Tapestry', which is an online learning journey of your child's development. You have access to your child's learning journey and can view it at any time you wish. When your child enters Nursery/Reception, we set your child up with an account, and provide you with a secure username and password. This will enable you to view your child's learning journey and see everything that they have been up to! You will receive an email every time a new observation has been uploaded. Observations can include; pictures, videos or quotes of what your child has done/said. Alongside their observation, you will see that we have linked the observation to 'Development Matters'. You can also add your own observations to Tapestry from home! We strongly believe that working together supports your child and gives them the best learning opportunities. Therefore, we value your input into these learning journals and would love to hear about events, activities, or achievements which have happened at home.

Any physical work that the children produce will be filed in their folder. As the school year progresses children in Reception will start to work in Phonics books, handwriting books and Independent writing books.

Each term your child will be a 'Focus Child' for a week. We will let you know by sending home a note to inform you that this is their week and ask you to fill in some details about home life and any changes in your child's life. As a 'Focus Child', we will check in with your child's progress, celebrate individual achievements and plan next steps. At the end of the week, we will discuss our findings with you and share your child's next steps.

### **Parent consultations**

We have parent consultations each term. The first one is in the autumn term when we have got to know your child and are able to plan their next steps.

At the end of the year, you will receive a full report stating where they are in their learning in relation to the Early Learning Goals. This information will also be passed onto the Local Authority as part of a statutory requirement.

### **Parents/Carers as Partners**

Parents/carers are children's most important educators in their child's earliest years, and they continue to play a major role in their children's learning when they enter the early years setting. Parents are welcomed and encouraged to share information about their child, to ask questions and to discuss their child's learning with the teachers.

They are encouraged to come on class trips with us, and to come into the classroom to view their child's learning at any time. We greatly value parents/carers role and look forward to working in partnership with you in our setting.

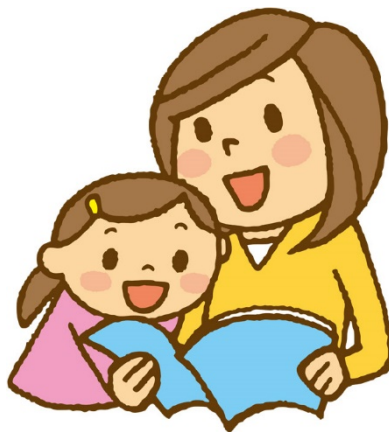


## Things you can do at home

Below are some activities you could do with your children to promote their development further.

Read to your child every day, talk about books, read familiar words to them, e.g. labels on their favourite foods, titles of TV programmes.

- Listen to songs, music, stories and rhymes.
- Talk with them, answer their questions and play memory games.
- Encourage them to ask questions.
- Count and use numbers in everyday situations.
- Help them to match and sort objects e.g. putting knives and forks, cups and saucers and socks into pairs, sorting big and little objects, putting objects in order of size.
- Encourage them to be more independent e.g. putting on their own clothes.
- Give them opportunities to help you around the house e.g. baking or food preparation. Encourage them to express their own ideas and feelings through using crayons, pens, pencils, paint, music and play.
- Encourage them to explore their own environment.
- Encourage respect for others.



## Developing Independence

Where possible we encourage children to become independent learners. We encourage children to:

- Put on/take off their coat and hang it up on their peg.
- Fasten their zip or buttons.
- Put their shoes on their correct feet.
- Dress/undress (P.E).
- Wash and dry their hands.

- Tidy up after themselves.
- Serve themselves e.g. spread butter on toast, pour their own drinks.



Ideally, your child should be able to use the toilet independently; however, we are aware that this may not be possible in certain circumstances. We will respect and give your child the utmost care and support when dealing with toileting issues. If your child has an accident or needs assistance, two adults take care of the situation as this complies with our safeguarding policy. Should your child have any problems regarding toileting, please let us know so we can help your child with this area.

### **Child-related Illnesses**

Below are some of the most common child-related illnesses and information about when your child can return to school. If your child needs to stay at home due to an illness, please inform the school as soon as possible.

- Chickenpox: Keep at home for 5 days from the onset of a rash.
- Colds: It is only necessary to exclude children with a temperature, a severe cough or a sore throat.
- Conjunctivitis: Exclusion is unnecessary unless there is a lot of pus is being produced, in this case keep at home until 3 days of treatment has been completed.
- Vomiting/diarrhoea: Keep at home until there have been no symptoms for 48 hours.
- Impetigo: Children should be excluded until the lesions have crusted over or until they have been receiving antibiotics for 48 hours.
- Head lice: Children may return after treatment.
- Threadworm: Children may return after treatment.

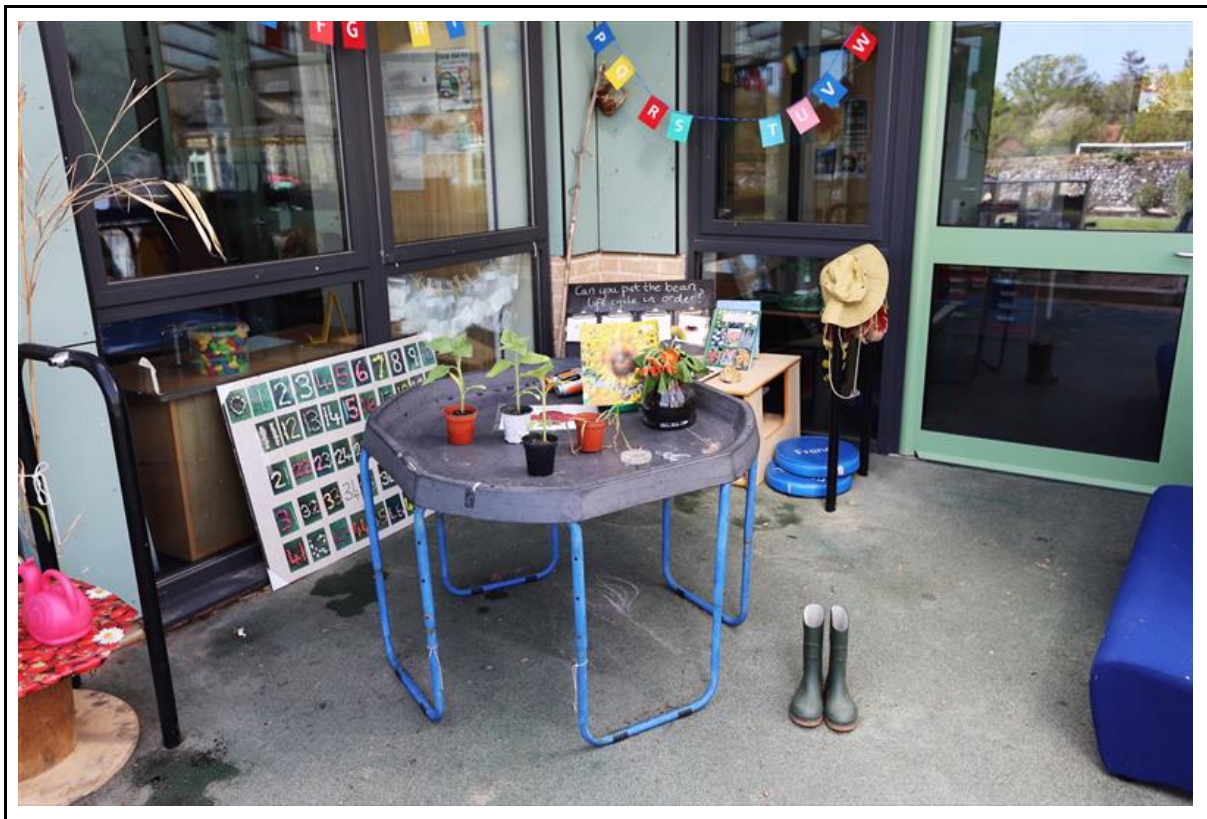
## **Pictures of important areas in our school**



**Our EYFS outdoor area**



**Part of our loose parts construction area**



Investigation area



Outdoor reading area



**The Mud kitchen**



**Our sandpit**

## Photographs of what we learn in our Continuous Provision



## Forest School



### Contact Information

Please visit the our website <http://www.nnat.org.uk/antingham-and-southrepps-primary-school/welcome/>

Click on the relevant links to keep up to date and see photographs of all the fun activities and learning that we do.

Look out for us on Facebook too. We regularly post pictures of the exciting learning your children have been up to in their classes.

Please also take the time to read our policies, which are also available on the website, as are our newsletters and curriculum overviews.

**Address:** Antingham and Southrepps Primary School,  
Lower Street  
Southrepps,  
Norfolk  
NR11 8UG

**Telephone:** 01263 833282

We are all looking forward to you joining us at our school. See you soon.

The Bee Team

